

NOTE: SEE PAGE 18 FOR WINDOW AND DOOR SCHEDULES. THIS HOUSE USES ? WINDOWS

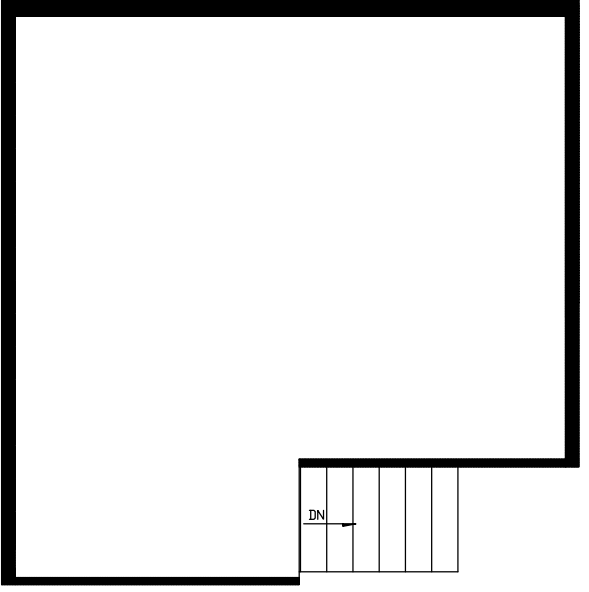
- NOTES:
1. * - DENOTES ADDITIONAL COLUMN IN BASEMENT
 2. STAIRS TO BE BUILT WITH 8 1/4" RISERS AND 9" TREADS
 3. BUILDER IS RESPONSIBLE FOR PROVIDING A PROPERLY SIZED HEATING SYSTEM TO COVER A 41,000 BTU LOSS
 - 4.

- 5.
- 6.
- 7.
- 8.
- 9.
- 10.
- 11.
- 12.

PAGE:	DATE: 10/13/04	DRAWN BY:	STATUS:	2864- WYOMING III 1st STORY FLOOR PLAN				BUILDER	CUSTOMER
				610 WEST ALLENTON STREET P.O. BOX 70 MT. GILEAD, NC 27306 PHONE: (910) 439-0046 FAX: (910) 439-4558				PROFESSIONAL BUILDING SYSTEMS	WYOMING III
2.1				PROFESSIONAL BUILDING SYSTEMS 1st STORY FLOOR PLAN				CITY	STATE
				4' PROW WING TRAPEZOID WINDOWS 6'-10" 10'-9" 3'-0" 6'-11"				MT. GILEAD	NC
				VAULTED CEILING GREAT ROOM VAULTED VAULTED VAULTED				COUNTY	SNOW LOAD
				13'-9" UNIT 'A' 13'-9" UNIT 'B' 13'-9" UNIT 'C' 13'-9" UNIT 'D' 13'-9" UNIT 'E' 13'-9" UNIT 'F'				MONTGOMERY	NC
				4' PROW WING TRAPEZOID WINDOWS 6'-10" 10'-9" 3'-0" 6'-11"				ORDER NO.	FILE NO.
				4' PROW WING TRAPEZOID WINDOWS 6'-10" 10'-9" 3'-0" 6'-11"				MODEL #227	WYOMING III

NOTE: SEE PAGE 18 FOR WINDOW AND DOOR SCHEDULES. THIS HOUSE USES ? WINDOWS

- NOTES: 1. 5. 9.
 2. 6. 10.
 3. 7. 11.
 4. 8. 12.

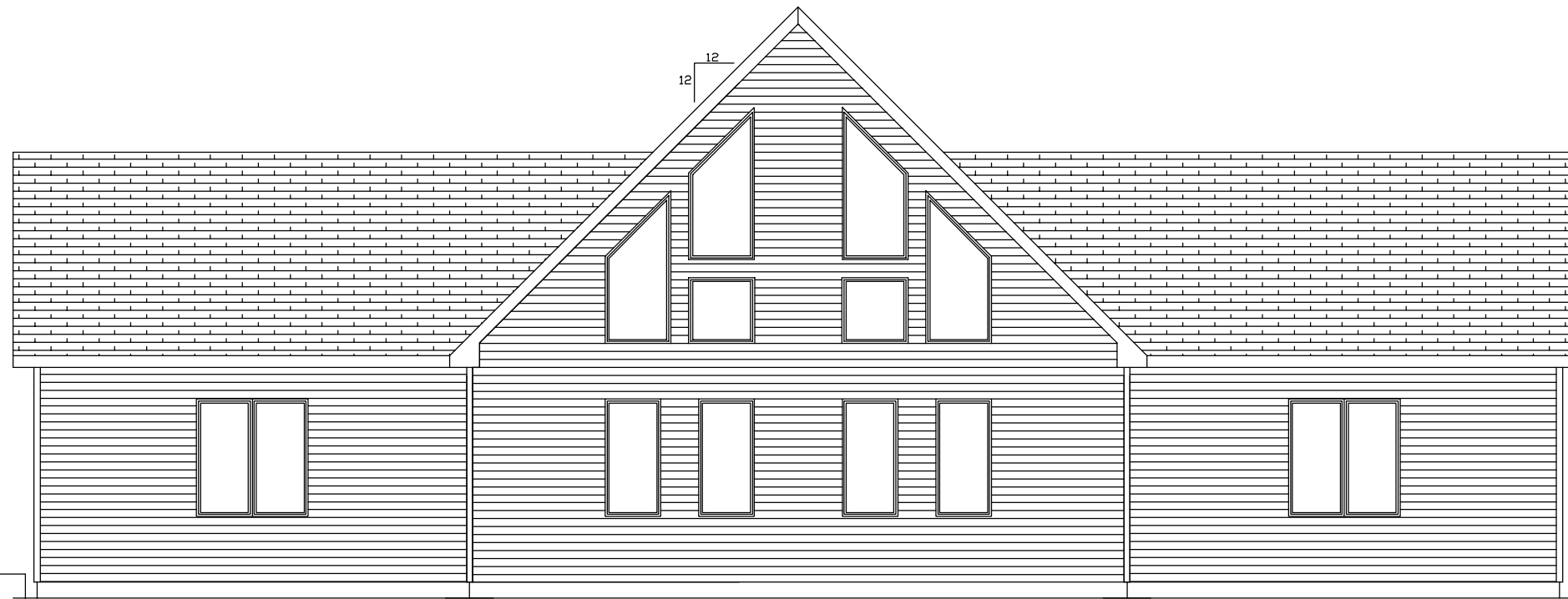


2864- WYOMING III
 2nd STORY FLOOR PLAN

PROFESSIONAL BUILDING SYSTEMS OF NC, LLC
 610 WEST ALLENTON STREET
 P.O. BOX 70
 MT. GILEAD, NC 27306
 PHONE: (910) 439-0046
 FAX: (910) 439-4558

BUILDER	PROFESSIONAL BUILDING SYSTEMS	CUSTOMER	WYOMING III
CITY	MT. GILEAD	STATE	NC
COUNTY	MONTGOMERY	SNOW LOAD	
WIND SPEED	WIND LOAD	FILE NO.	WYOMING III
ORDER NO.	SERIAL NO.	MODEL	#227
STD			

DATE:	DRAWN BY:	STATUS:
10/13/04		



ATTIC VENTILATION
 LOWER 50% @ EAVES
 REQ'D 2.20 SUPPLIED 2.85
 UPPER 50% 3'-0" MIN ABOVE EAVES
 REQ'D 2.20 SUPPLIED 5.52

NOTE: SEE PAGE 4.1 FOR EXTERIOR WALL FINISH, SOFFIT FINISH, AND ROOF COVERING.

NOTE - ACTUAL HOUSE MAY VARY FROM ELEVATION

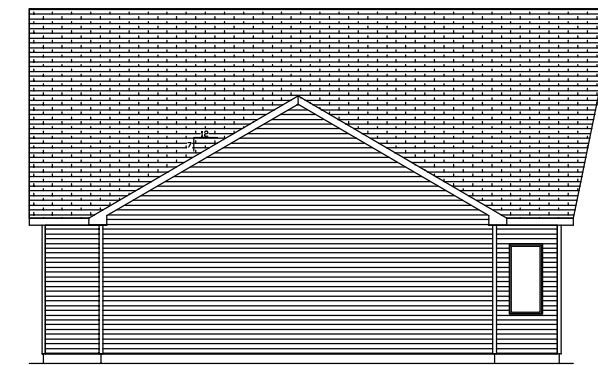
FRONT ELEVATION



RIGHT ELEVATION




REAR ELEVATION



LEFT ELEVATION

APPROVED
 I HAVE REVIEWED THESE PLANS AND
 SPECIFICATIONS AS OF THIS DATE AND
 MY SIGNATURE EVIDENCES MY APPROVAL

DATE:	10/13/04	DRAWN BY:		STATUS:	
BUILDER:	PROFESSIONAL BUILDING SYSTEMS	CITY:	MT. GILEAD	CUSTOMER:	WYOMING III
COUNTY:	MONTGOMERY	WIND SPEED:		STATE:	NC
WIND LOAD:		SNOW LOAD:			
ORDER NO.:		SERIAL NO.:		FILE NO.:	
2864- WYOMING III		610 WEST ALLENTON STREET P.O. BOX 70 MT. GILEAD, NC 27306 PHONE: (910) 439-0046			
		 PROFESSIONAL BUILDING			